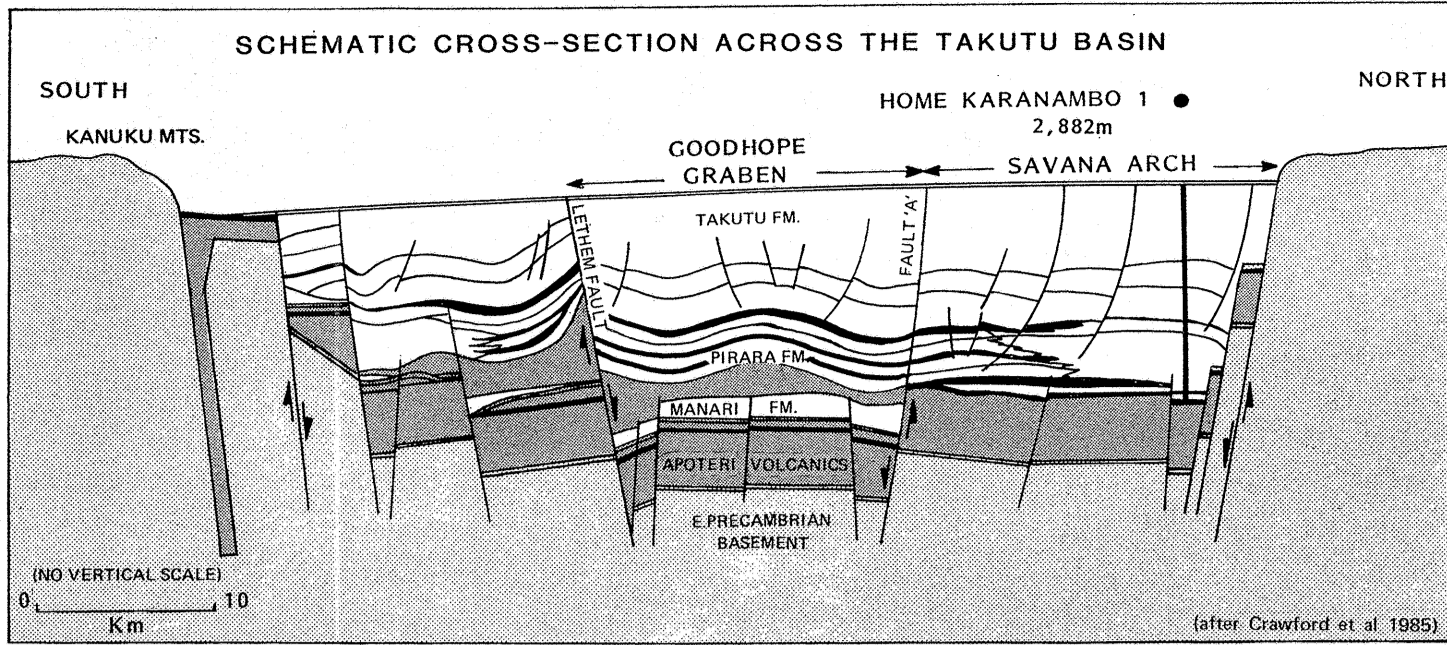
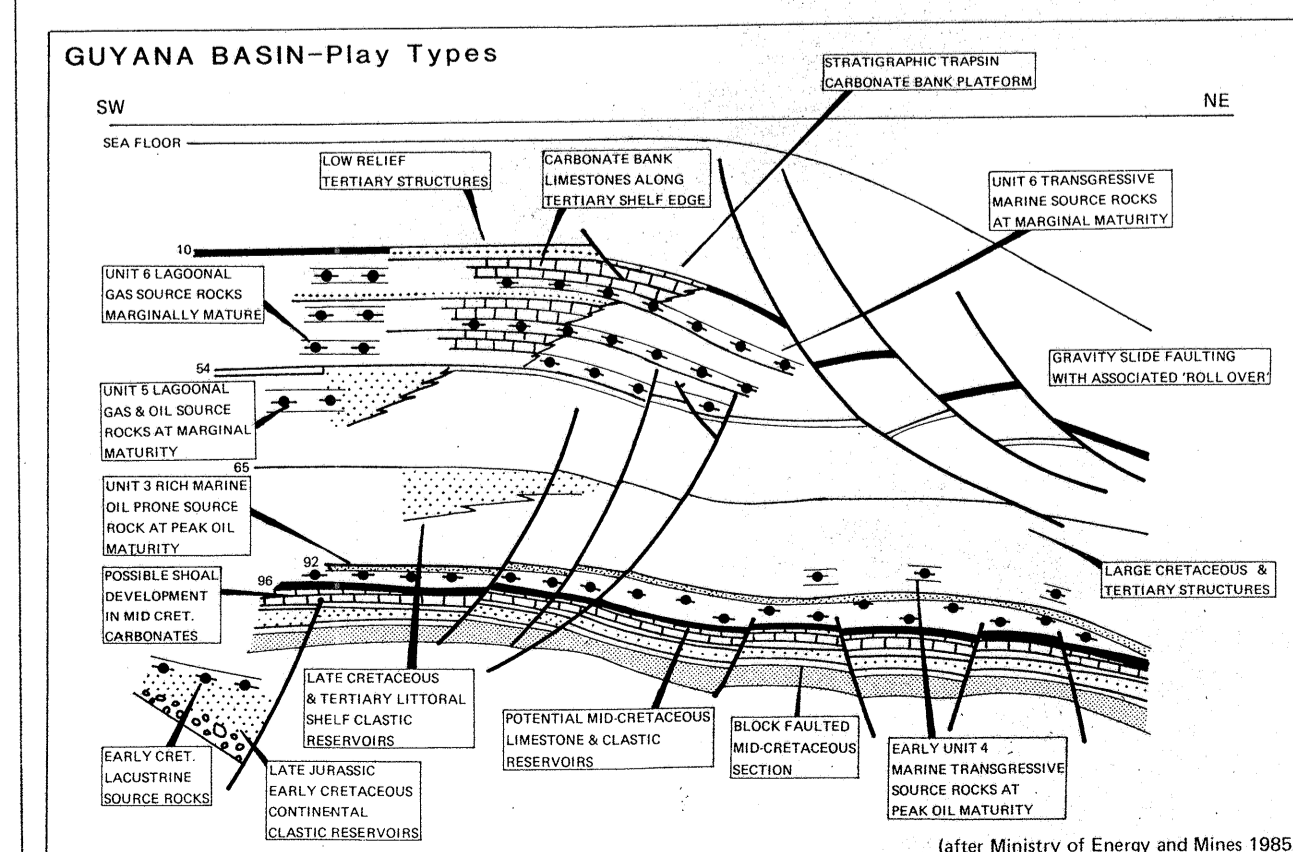
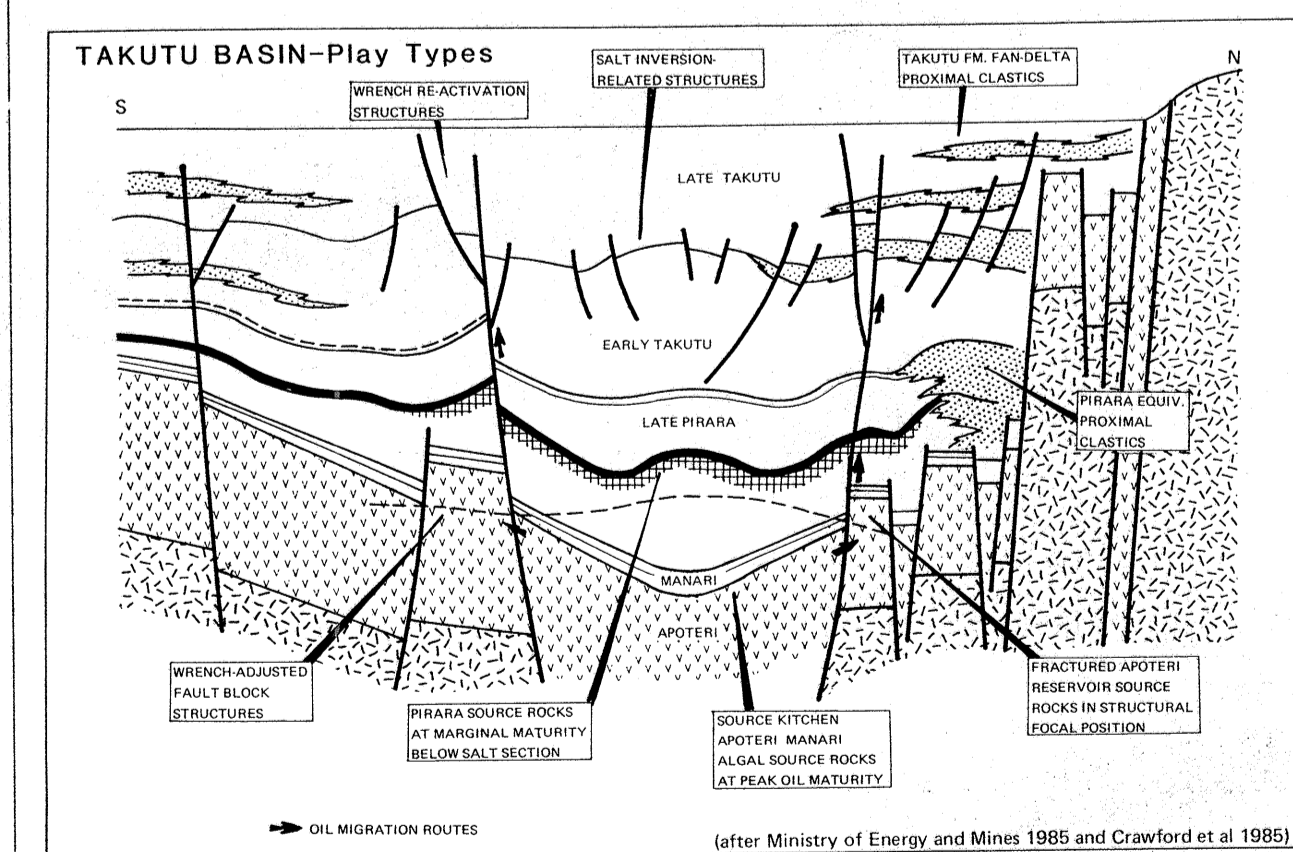
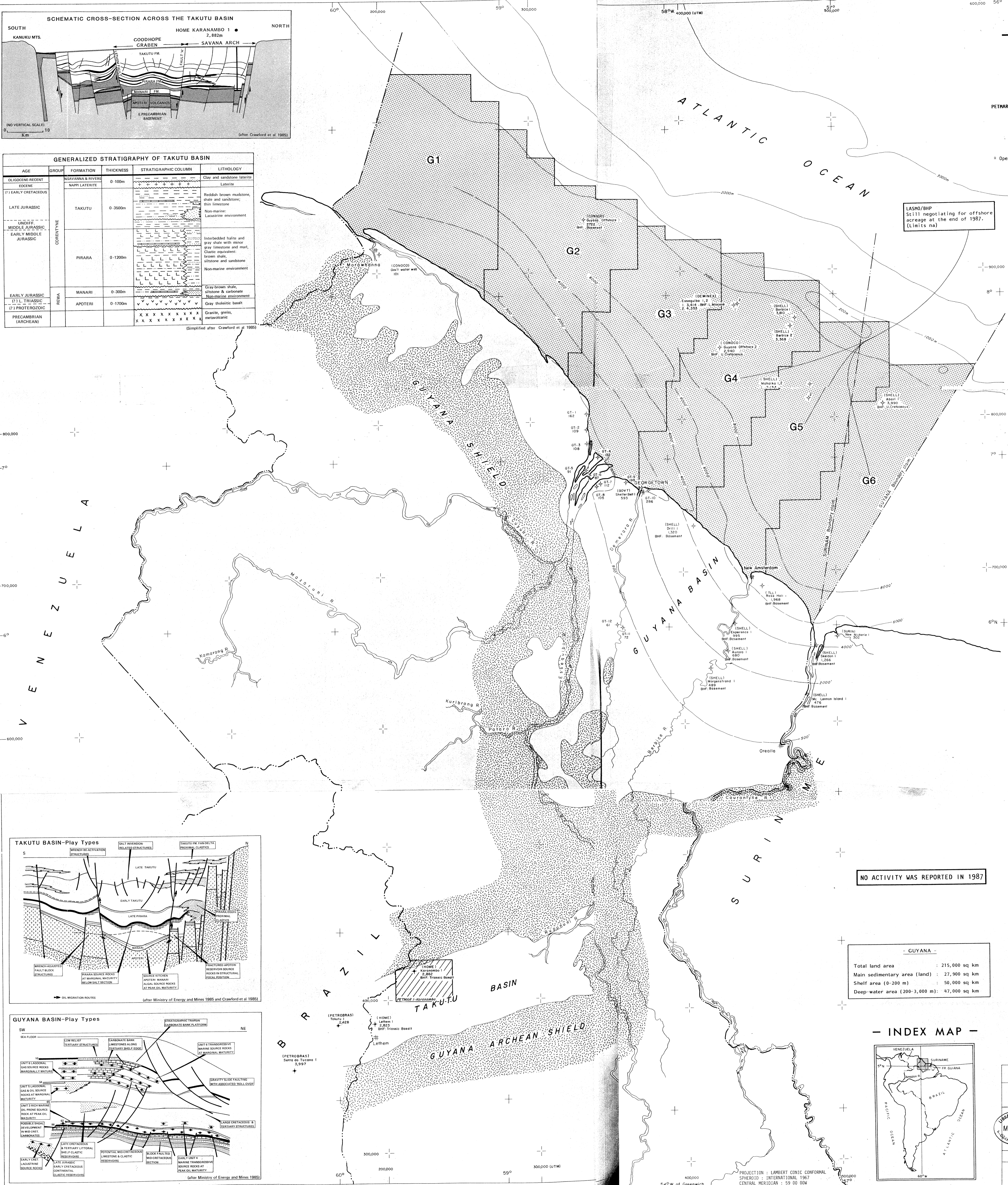


— LIST OF RIGHTHOLDERS —

Sq Km held as of 31 December 1987			
PETMAR 1	Petro-Marine Engineering Petrolam Trinidad Ltd	50,000 50,000	977
Operator			977 Land
Total for Guyana			977



AGE	GROUP	FORMATION	THICKNESS	STRATIGRAPHIC COLUMN	LITHOLOGY
OLIGOCENE RECENT	CORIENYNE	MANANIAN & BYRIDE	0-100m	[Diagrammatic representation]	Clay and sandstone, laterite
(P) EARLY CRETACEOUS		NAPPI LATERITE			Laterite
LATE JURASSIC	CORIENYNE	TAKUTU	0-3500m	[Diagrammatic representation]	Reddish brown mudstone, shale and sandstone, thin limestone Non-marine Lacustrine environment
UNDIFF. MIDDLE JURASSIC		PIRARA			0-1200m
EARLY JURASSIC	MANARI		0-300m	[Diagrammatic representation]	
(T) PROTEROZOIC	REWA	APOTERI	0-1700m	[Diagrammatic representation]	Gray to black basalt
PRECAMBRIAN (ARCHEAN)				[Diagrammatic representation]	Granite, gneiss, meta-sediments



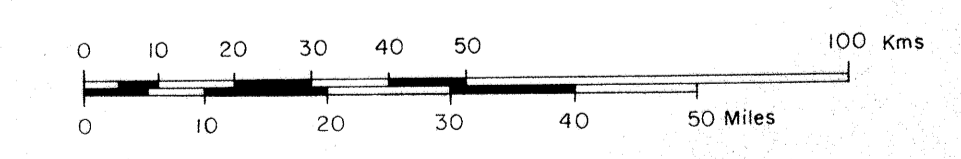
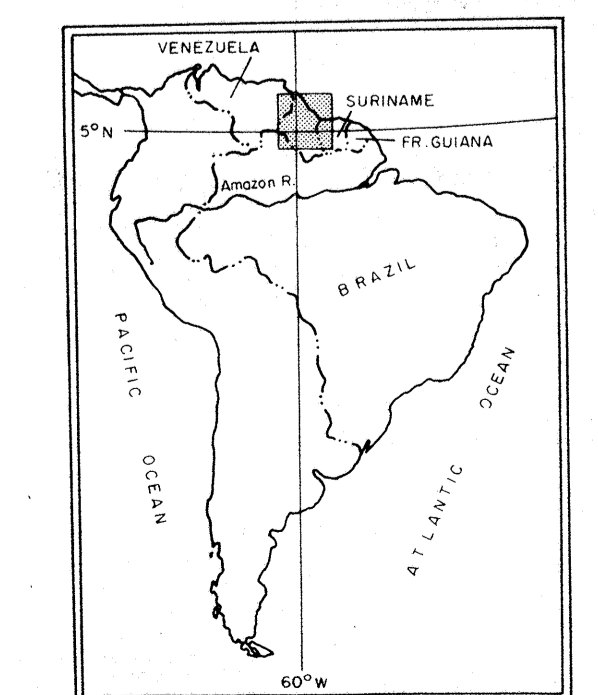
- LEGEND —**
- WELL SYMBOLS —**
- Approx. location
 - Location of active
 - ✕ Abandoned
 - ⊕ Suspended
 - ⊕ Status unknown
 - ⊕ Government test
 - Oil or condensate
 - Oil or condensate shows
 - * Gas
 - ⊕ Gas shows
 - 1500 Total depth in meters
 - BHF Bottom hole formation
- FIELD SYMBOLS —**
- Oil field
 - Gas field
- LICENSE SYMBOLS —**
- Licensed area
- EXPLORATION SYMBOLS —**
- (S) Seismic survey
 - (G) Gravimetry survey
 - (Fg) Field geology survey
 - (M) Magnetometry survey
- GEOLOGICAL SYMBOLS —**
- Sedimentary cover
 - ▨ Undifferentiated basement complex
 - 2000' Depth to basement in feet
- OTHER SYMBOLS —**
- International boundary
 - - - Disputed boundary
 - Isobath in meters

NO ACTIVITY WAS REPORTED IN 1987

— GUYANA —

Total land area : 215,000 sq km
Main sedimentary area (land) : 27,900 sq km
Shelf area (0-200 m) : 50,000 sq km
Deep-water area (200-3,000 m) : 47,000 sq km

— INDEX MAP —



FOREIGN SCOUTING SERVICE
SYNOPSIS 1987

GUYANA

SCALE : 1 : 1,000,000 January 1988

Petroconsultan Return to Map Library **9800-25**
INTERNATIONAL ENERGY LOAN ONLY **27563**

LIBRARY OF CONGRESS
MAY 21 1988
GEOGRAPHY AND MAP DIVISION

PROJECTION : LAMBERT CONIC CONFORMAL
SPHEROID : INTERNATIONAL 1967
CENTRAL MERIDIAN : 59 00 00N
STANDARD PARALLELS : 3 00 00N 8 00 00N

Sheet 153 A